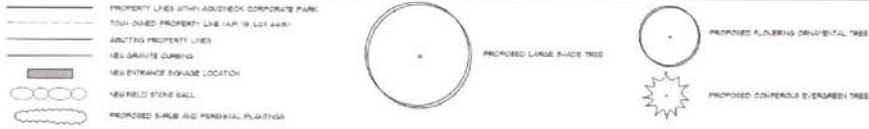


LEGEND



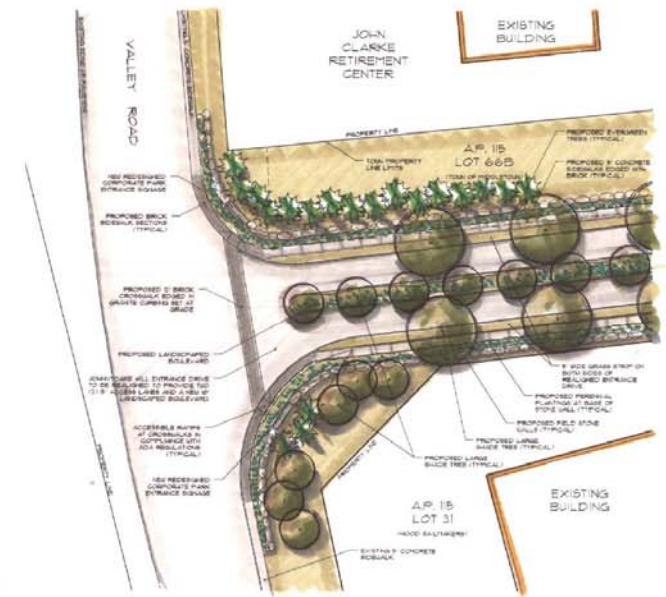
EXISTING VALLEY ROAD ENTRANCE
NOT TO SCALE



TYPICAL ENTRANCE ENHANCEMENTS
NOT TO SCALE

REFERENCES:

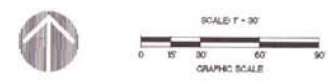
1. AERIAL PHOTOGRAPHY PROVIDED BY THE TOWN OF RIDGEFORD ON 8-10-04 IN DIGITAL FILE ENTITLED "AOP" FILE # A-031, DATED 10/01, AND 8/14/04 IN PHOTOGRAPHIC EDITION 1202, REPORT NO. 102, RIDGEFORD ISLAND BE PROVIDED BY RHODE ISLAND GEOGRAPHIC INFORMATION SYSTEM (RIGIS) ENVIRONMENTAL DATA CENTER UNIVERSITY OF RHODE ISLAND.
2. LAND RECOGNITION ASSESSOR'S PLAT 18, PROVIDED BY THE TOWN OF RIDGEFORD ON 5-09-04 IN DIGITAL FILE ENTITLED "APPLATE18".



TYPICAL PARK ENTRANCE ENHANCEMENTS

NOTE:
Similar Improvements could be implemented at both the Valley Road Entrance, and the Aquidneck Avenue Entrance

PROPOSAL EXHIBIT 1: TYPICAL ENTRANCE CONCEPT
AQUIDNECK CORPORATE PARK
MIDDLETOWN, RHODE ISLAND
NOVEMBER 2005



THE GIFFORD
DESIGN GROUP, Inc.
LANDSCAPE ARCHITECTURE
ENVIRONMENTAL PLANNING
100 WASHINGTON STREET, SUITE 100
PROVIDENCE, RHODE ISLAND 02903
PHONE: 401-875-1000 FAX: 401-875-1000