

PLANTING NOTES

- LANDSCAPE CONTRACTOR SHALL VISIT SITE PRIOR TO SUBMITTING BID TO BECOME COMPLETELY FAMILIAR WITH SITE CONDITIONS.
- NO PLANTING WILL BE INSTALLED UNTIL ALL GRADING AND CONSTRUCTION HAS BEEN COMPLETED IN THE IMMEDIATE AREA.
- CONTRACTOR TO VERIFY ALL UTILITIES ON PROPERTY AND TO PROTECT ALL UTILITIES DURING EXCAVATION.
- IF THERE IS A DISCREPANCY BETWEEN THE NUMBER OF PLANTS SHOWN ON THE PLAN AND THE NUMBER OF PLANTS SHOWN IN THE PLANT LIST, THE NUMBER OF PLANTS SHOWN ON THE LIST WILL TAKE PRECEDENCE.
- ALL CONTAINER MATERIAL TO BE GROWN IN CONTAINER A MINIMUM OF SIX MONTHS.
- ALL MATERIAL SHALL COMPLY WITH THE LATEST EDITION OF THE AMERICAN STANDARD FOR NURSERY STOCK, ACCORDING TO THE AMERICAN ASSOCIATION OF NURSEYMEN.
- CONTRACTOR SHALL REPAIR ALL DAMAGE TO PROPERTY FROM PLANTING OPERATIONS AT NO COST TO THE OWNER.
- CONTRACTOR SHALL GUARANTEE NEW PLANT MATERIAL THROUGH ONE CALENDAR YEAR FROM TIME OF PROVISIONAL ACCEPTANCE.
- ALL PROPOSED PLANTS SHALL BE LOCATED CAREFULLY AS SHOWN ON THE PLANS AND THE PLACEMENT SHALL BE APPROVED BY THE LANDSCAPE ARCHITECT BEFORE THE INSTALLATION.
- ALL DISTURBED AREAS NOT TO BE PAVED OR PLANTED SHALL BE LOAMED AND SEEDED AS SHOWN. SEE SPECIFICATIONS FOR SOIL PREPARATION AND SEED MIX.
- TWO INCH (2") DEEP, FINELY SHREDDED BARK MULCH WILL BE INSTALLED AROUND ALL TREES AND SHRUBS THAT ARE ISOLATED FROM GROUND COVER AREAS AND GENERAL SHRUB MASSES.
- ALL PLANT MATERIAL SHALL BE INSPECTED BY THE LANDSCAPE ARCHITECT ON SITE PRIOR TO INSTALLATION. THE LANDSCAPE ARCHITECT WILL TAG ALL TREES AT THE NURSERY AND INSPECT THEM AFTER DELIVERY TO THE SITE. SEE SPECIFICATIONS FOR TAGGING, INSPECTION, AND ACCEPTANCE OF PLANT MATERIAL.
- LANDSCAPE ARCHITECT SHALL CONFIRM PLANT LIST AND APPROVE SUBSTITUTIONS OF PLANT VARIETIES PRIOR TO ORDERING OF MATERIAL.
- SOIL MIX: 1/3 PEAT MOSS, 1/3 SCREENED LOAM, 1/3 DEHYDRATED MANURE.
- THE OWNER RESERVES THE RIGHT TO SUBSTITUTE PLANT SELECTIONS WITH PLANTS OF SIMILAR CHARACTERISTICS IF THE SPECIFIED PLANTS ARE NOT AVAILABLE IN ACCEPTABLE QUANTITIES OR CONDITIONS.

GENERAL NOTES

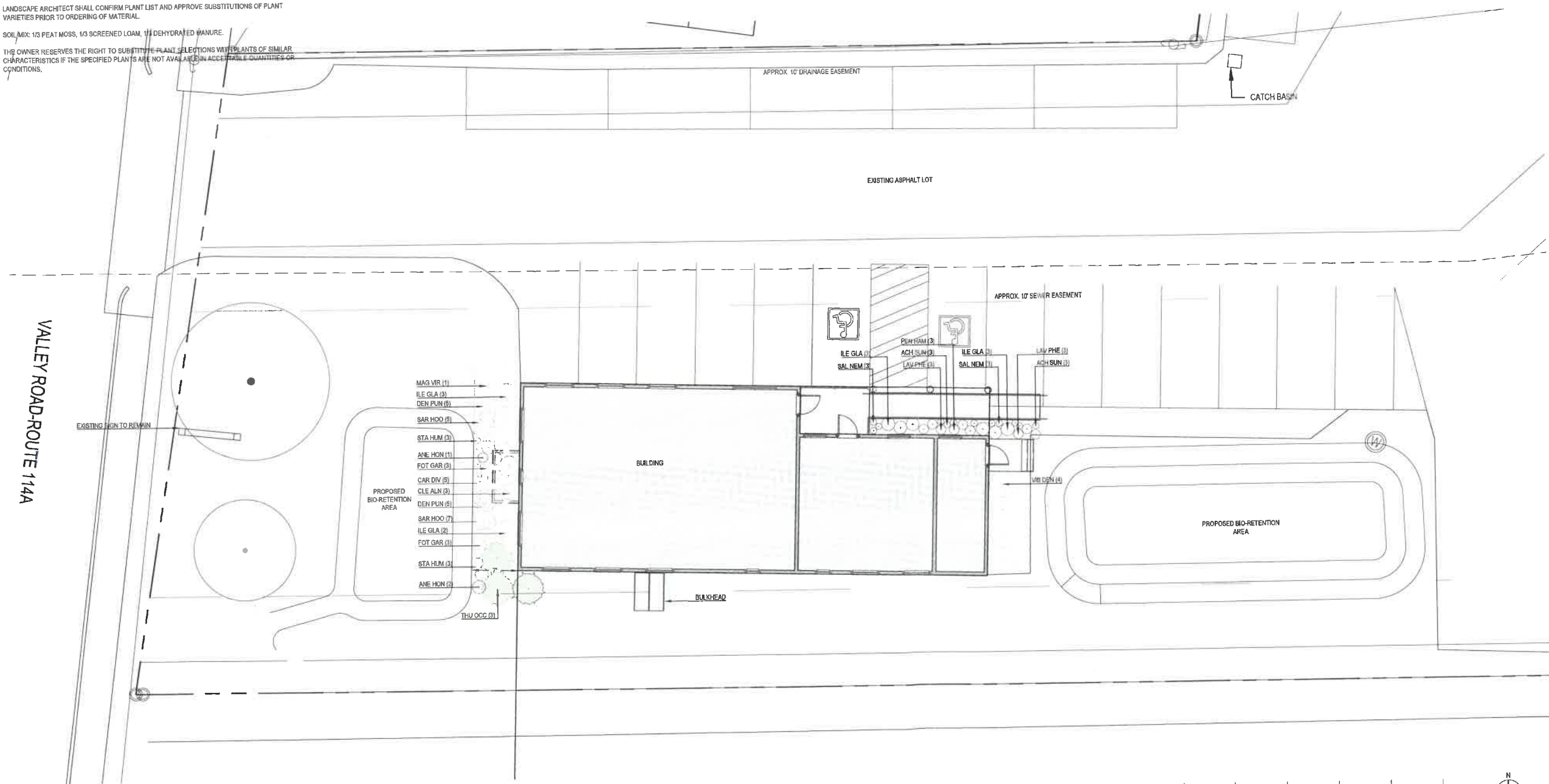
- THE CONTRACTOR SHALL VERIFY ALL EXISTING CONDITIONS AND UTILITIES AND REPORT ANY DISCREPANCIES TO THE LANDSCAPE ARCHITECT.
- IT IS THE CONTRACTOR'S RESPONSIBILITY TO VERIFY THE LOCATION OF ALL UTILITIES BY NOTIFYING DIG-SAFE AT 1-800-322-4844 AT LEAST 72 HOURS PRIOR TO ANY EXCAVATION.
- THE CONTRACTOR SHALL CONDUCT PRELIMINARY INVESTIGATIONS INCLUDING ALL NECESSARY EXCAVATION TO DETERMINE IF THE WORK CAN BE DONE AS SHOWN ON THE PLANS. CHANGES MAY BE MADE AS REQUIRED BY FIELD CONDITIONS AND AS DIRECTED BY THE LANDSCAPE ARCHITECT.
- ALL EXISTING UTILITIES MAY NOT BE SHOWN ON THE DRAWING. THE CONTRACTOR SHALL ASSUME RESPONSIBILITY FOR DETERMINING THE EXACT LOCATION, SIZE, AND TYPE OF ALL UNDERGROUND UTILITIES AND FOR PROTECTING ALL LINES DURING CONSTRUCTION.
- ALL WORK SHALL COMPLY WITH ALL APPLICABLE STATE AND LOCAL REGULATIONS.

PLANTING LEGEND

SYMBOL	BOTANICAL NAME	COMMON NAME	QTY	SIZE
TREES				
MAG VIR	MAGNOLIA VIRGINIANA	SWEETBAY MAGNOLIA	1	7/8" B&B
THU OCC	THUJA OCCIDENTALIS 'DEGROOT'S SPIRE'	DEGROOT'S SPIRE ARBORVITAE	3	6/7" B&B
SHRUBS				
CLE ALN	CLETHRALMIFOLIA 'HUMMINGBIRD'	HUMMINGBIRD SUMMERSWEET	3	5 GAL CONT.
FOT GAR	FOTHERGELLA GARDENII	DWARF FOTHERGILLA	6	3 GAL CONT.
ILE GLA	ILEX GLABRA 'SHARROCK'	SHARROCK HAWKBIT	11	24/36" B&B
SAR HOO	SARCOCCOA HOOKERIANA VAR. HUMILIS	SWEETBOX	12	2 GAL CONT.
VB DEN	VIBURNUM DENTATUM 'CHICAGO LUSTRE'	ARROWWOOD VIBURNUM	4	3/4" B&B
GRASSES				
CAR DIV	CAREX DINALSA	GRASSLAND SEDGE	5	1 GAL CONT.
PEN HAM	PENNISETUM ALOPECUROIDES 'HAMLIN'	FOUNTAIN GRASS	3	1 GAL CONT.
PERENNIALS				
ANE HON	ANEMONE 'HONORE JOBERT'	WHITE ANEMONE	3	1 GAL CONT.
ACH SUN	ACHILLEA 'SUNNY SENSATION'	SUNNY SENSATION YARROW	6	1 GAL CONT.
LAV PHE	LAVANDULA 'INTERMEDIA 'NIKO''	PHENOMENAL LAVENDER	6	1 GAL CONT.
SAL NEM	SALVIA MEMOROSA 'CARADONNA'	MEADOW SAGE	15	1 GAL CONT.
STA HUM	STACHYS 'HUMMELC'	HUMMEL'S EAR	6	1 GAL CONT.
FERNS				
DEN FUN	DENNSTAEDIA PUNCTILOBULA	HAYSCENTED FERN	10	1 GAL CONT.

VERDE DESIGN + HORTICULTURE
 89 DR MARCUS WHEATLAND BLVD
 NEWPORT RI 02840
 O. 401 619-0562
 verdedesign@gmail.com

ENGINEER
 PRINCE ENGINEERING, INC.
 27 SAKONNET RIDGE DRIVE
 TIVERTON, RHODE ISLAND
 401 819 5385



ASPIRE DERMATOLOGY
 102 VALLEY ROAD
 MIDDLETOWN, RI



PROJECT NUMBER: 21.035
 DRAWN BY: ND
 CHECKED BY: PSR
 SCALE: 1"=40'-0"
 DATE: 08.16.2021

REVISIONS:

NO.	DESCRIPTION

LANDSCAPE PLAN

L1.0