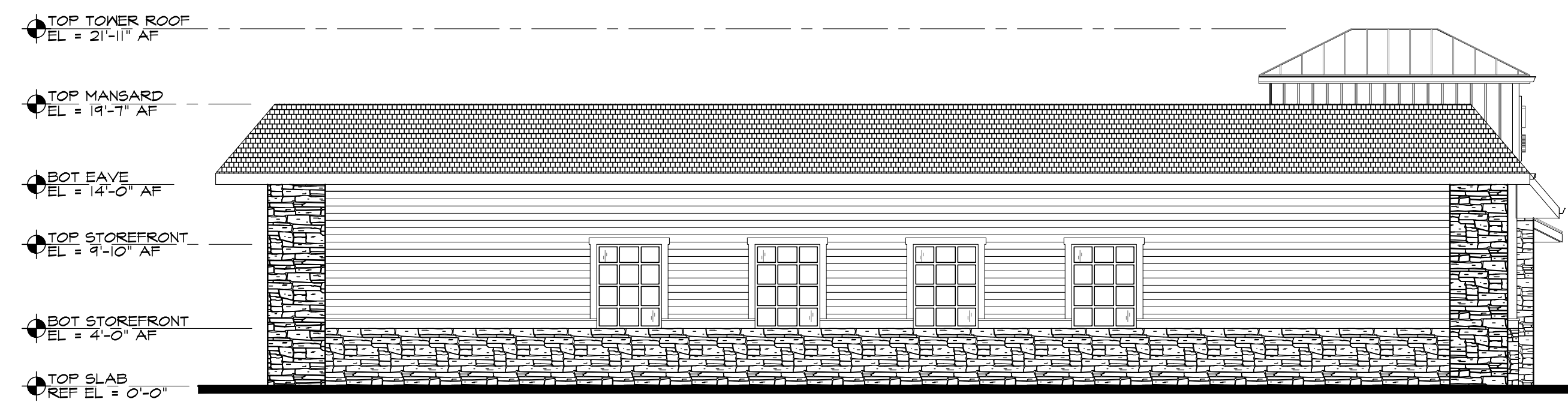
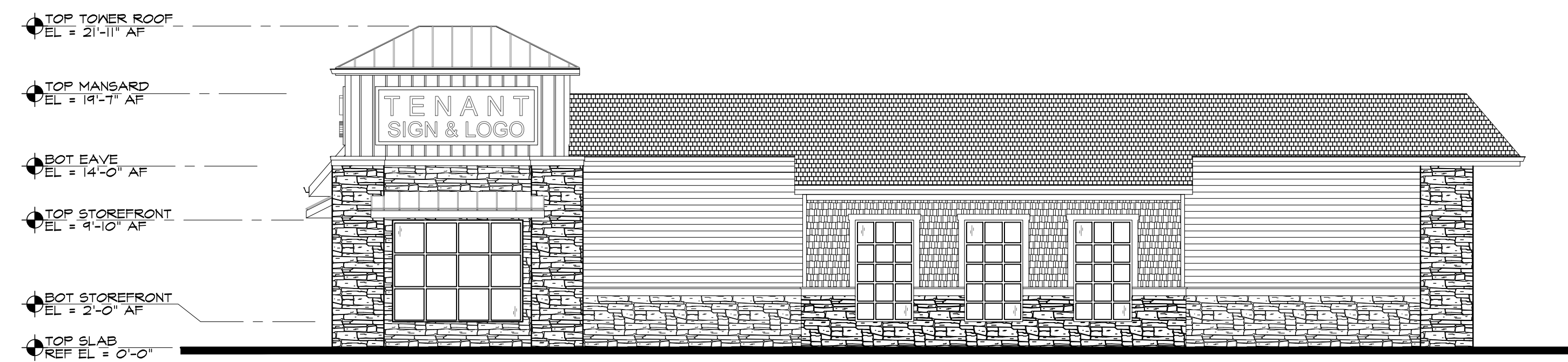


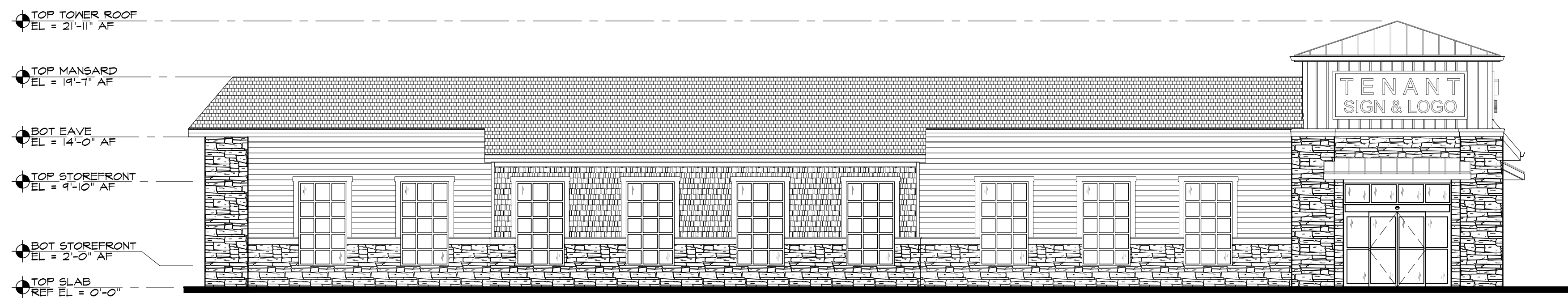
4 PROPOSED EAST ELEVATION
SCALE: 1/8" = 1'-0"



3 PROPOSED NORTH ELEVATION
SCALE: 1/8" = 1'-0"



2 PROPOSED SOUTH ELEVATION
SCALE: 1/8" = 1'-0"



1 PROPOSED WEST ELEVATION
SCALE: 1/8" = 1'-0"