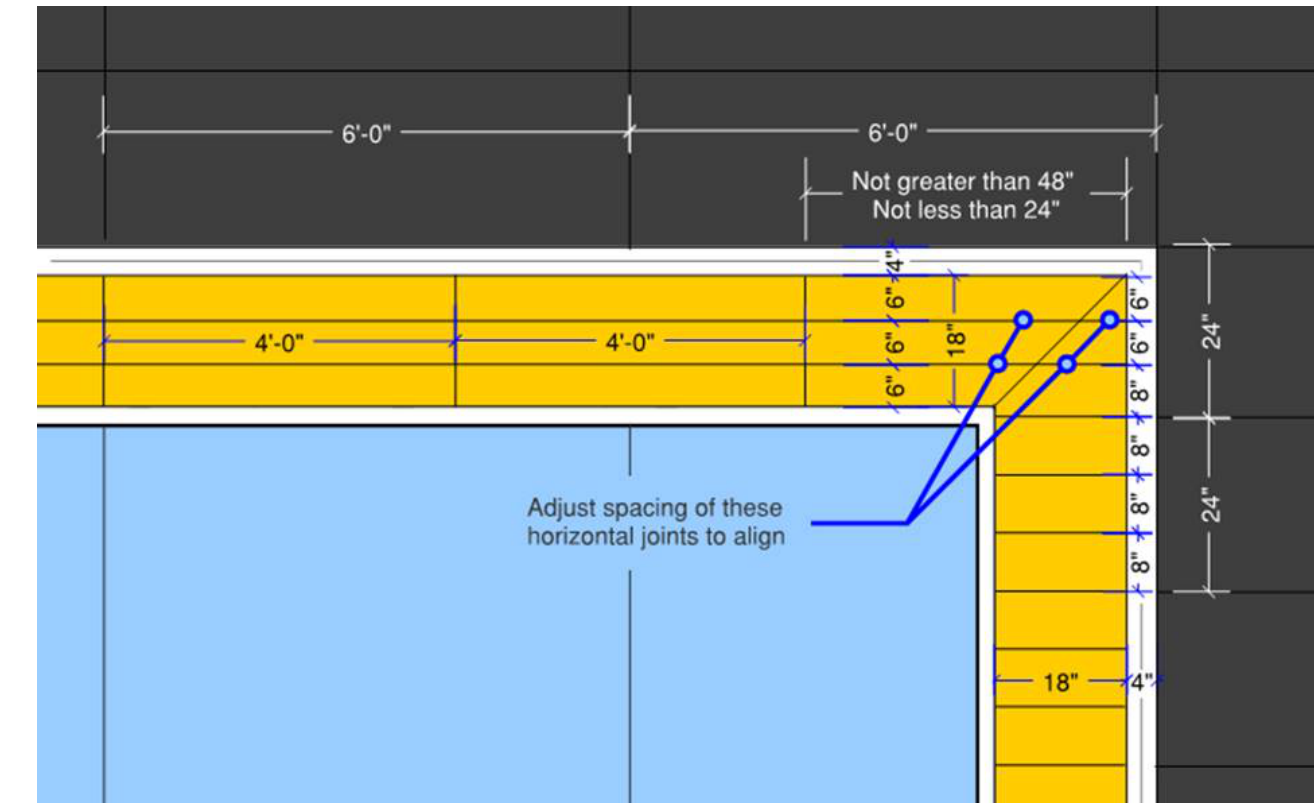
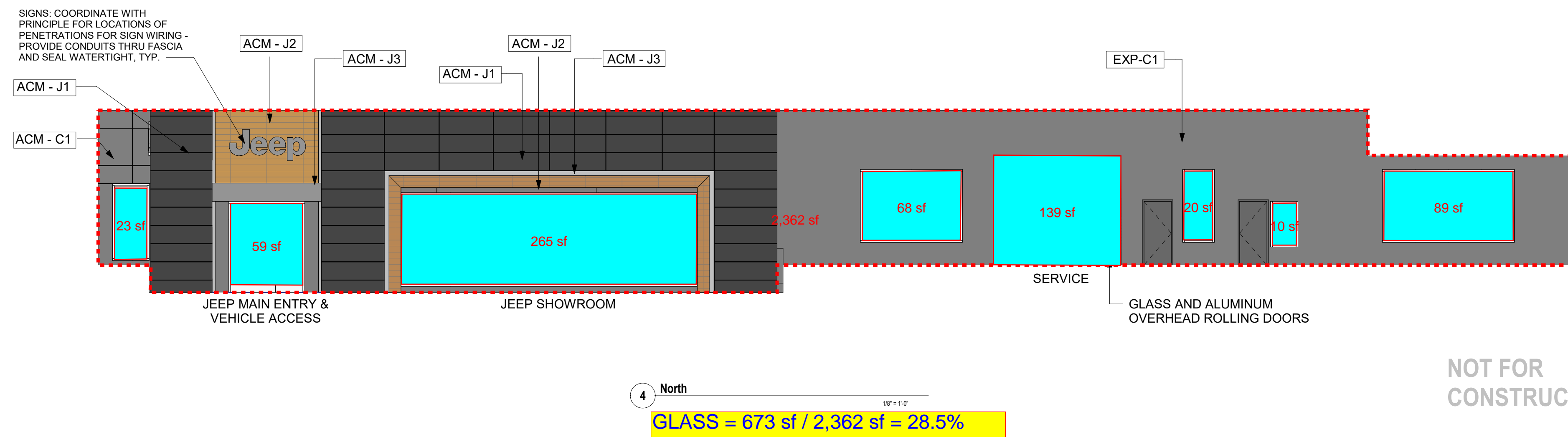
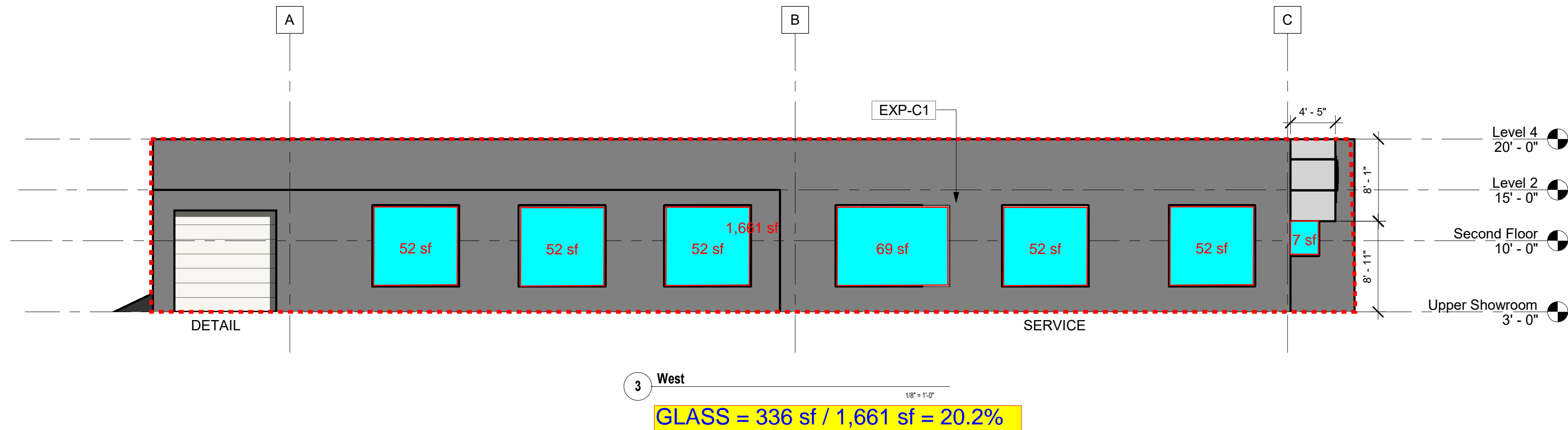
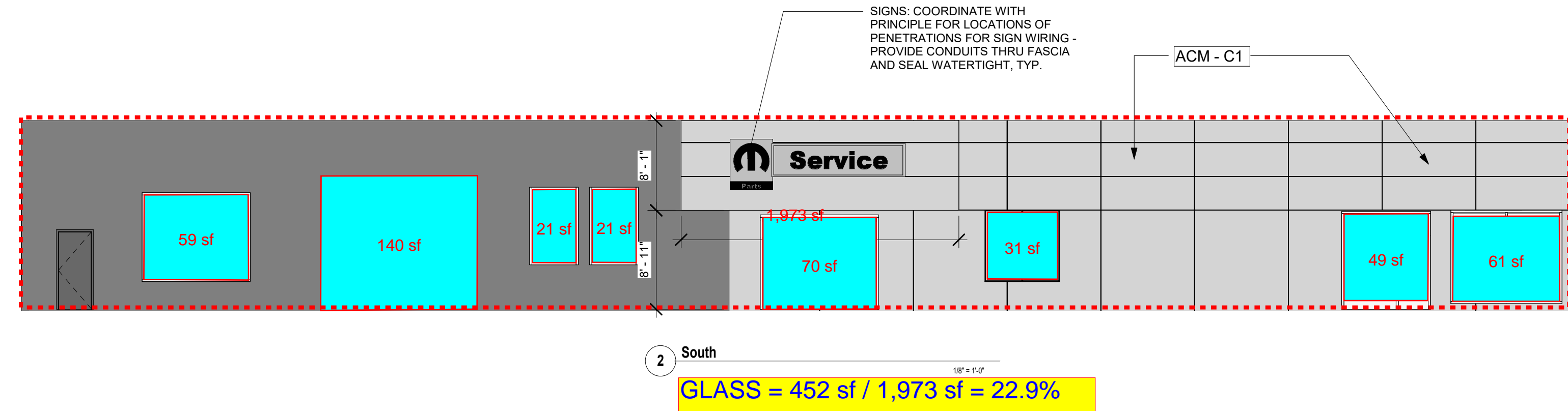
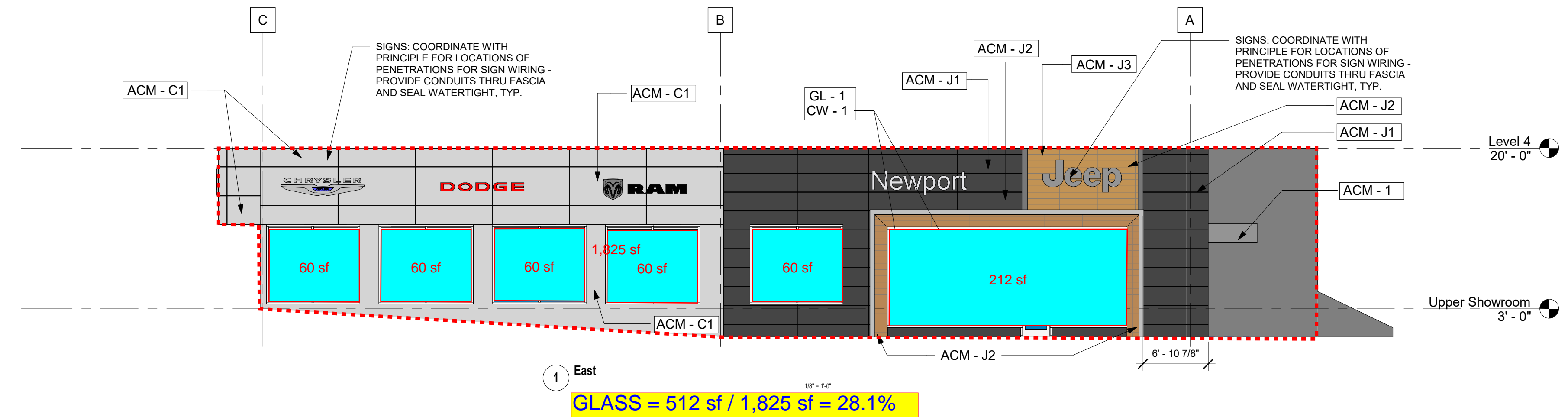


8/10/2023 1:48:58 PM



NOTE: ACM INSTALLED BY STELLANTIS APPROVED SUPPLIER
5 ACM Corner Detail
 1/2" = 1'-0"



EXTERIOR FINISH MATERIALS SCHEDULE		
SYMBOL	DESCRIPTION	BRAND
ACM-J1	ALUMINUM COMPOSITE METAL RAINSCREEN COLOR: ALPOLIC ANTHRACITE GREY PROVIDED AND INSTALLED BY STELLANTIS APPROVED VENDOR TYPICAL PANEL SIZE: 4' W X 23" H	JEEP
ACM-J2	ALUMINUM COMPOSITE METAL RAINSCREEN COLOR: ALPOLIC HARVEST TRAIL BAMBOO PROVIDED AND INSTALLED BY STELLANTIS APPROVED VENDOR	JEEP
ACM-J3	ALUMINUM COMPOSITE METAL RAINSCREEN COLOR: ALPOLIC HIGH POLISHED / INTEGRAL LED LIGHT STRIP PROVIDED AND INSTALLED BY STELLANTIS APPROVED VENDOR	JEEP
ACM-1	ALUMINUM COMPOSITE METAL RAINSCREEN COLOR: ALPOLIC HIGH POLISHED ALUMINUM PROVIDED AND INSTALLED BY STELLANTIS APPROVED VENDOR	JEEP
ACM-C1	ALUMINUM COMPOSITE METAL RAINSCREEN COLOR: ALPOLIC SILVER METALLIC (BSX) PROVIDED AND INSTALLED BY STELLANTIS APPROVED VENDOR	CDR
EXP-J2	EXTERIOR PAINT (FOR EXISTING CORRUGATED METAL SIDING & CMU) MANF: BENJAMIN MOORE COLOR: BLACK MAGIC 6991 / FINISH: SATIN	JEEP
EXP-C1	EXTERIOR PAINT (FOR EXISTING CORRUGATED METAL SIDING & CMU) MANF: BENJAMIN MOORE COLOR: PELICAN GRAY 1612 / FINISH: SATIN	CDR
EIFS-1	EXTERIOR INSULATION FINISH SYSTEM COLOR & TEXTURE: MATCH ALPOLIC SILVER ACM-C1 GREY STO CORP #102 SANDBLAST	CDR
EIFS-2	EXTERIOR INSULATION FINISH SYSTEM COLOR & TEXTURE: MATCH ANTHRACITE ACM-J1 GREY STO CORP #102 SANDBLAST	CDR



40850 Grand River Ave Suite 200
 Novi, MI, 48375
 248.471.7877 ph
 248.471.7868 fax

consultant

client

notice

THIS ARCHITECTURAL DRAWING IS GIVEN IN STRICT CONFIDENCE. NO USE, IN WHOLE OR PART, MAY BE MADE WITHOUT PRIOR WRITTEN CONSENT OF CITYSCAPE ARCHITECTS. ALL RIGHTS ARE HEREBY RESERVED.

CITYSCAPE ARCHITECTS, LLC
 COPYRIGHT YEAR 2023

project title

OCEAN NEWPORT CDR+J

310 WEST MAIN RD.
 MIDDLETOWN, RI 02842

sheet title

EXTERIOR ELEVATIONS

DO NOT SCALE DRAWINGS
 USE FIGURED DIMENSIONS ONLY



project number

23008

drawn KHS
 approved DM

issued date
 PROGRESS 07.21.2023
 PLANNING 08.09.2023

sheet number

A-211

NOT FOR CONSTRUCTION